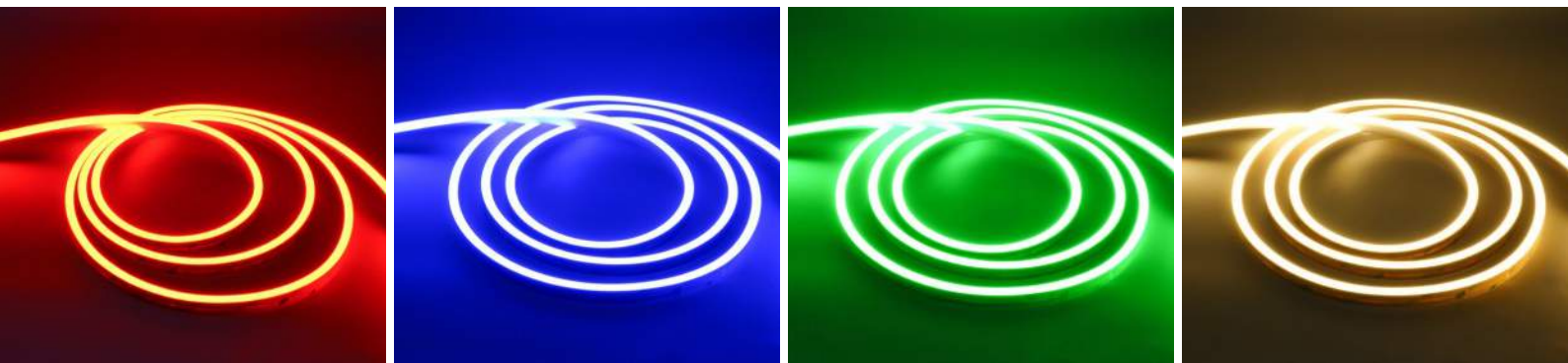




6584-RGBW-NSV

RGBW Neon IP67 Sideview Strip



Resilient, durable silicone



Side-mounted tape for curves

6584-RGBW-NSV



6584-RGB/XX-24V-IP67-NSV

- 1/4" x 7/16" Mini size with high flexibility
- Side-view design makes dot-free illumination and high uniformity
- Injection molding plug, IP67 rated
- Frosted, dust-proof process, anti-UV



8MM

RGBW

Cross section
1/4" x 7/16"
6x11mm

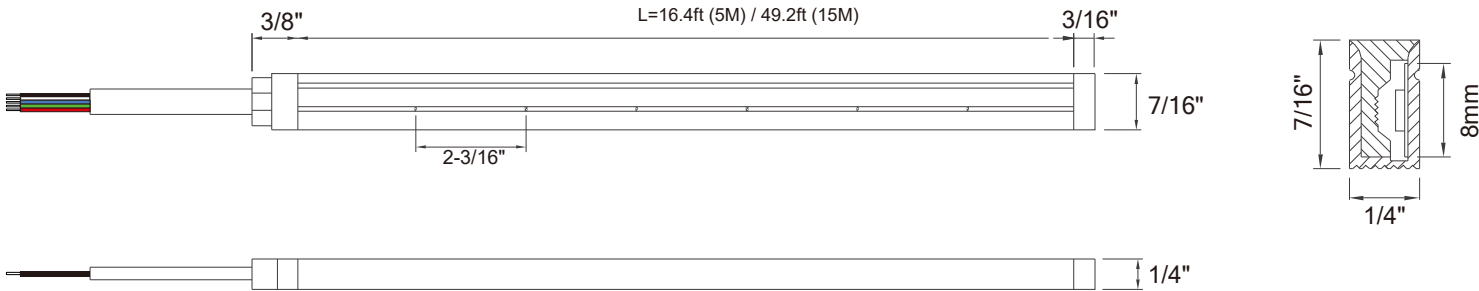
W/ft: 4.4W/ft

Max length : 16.4ft/49.2ft

Wire type

Side-View

Dimensions





RGBW Photoelectric parameters

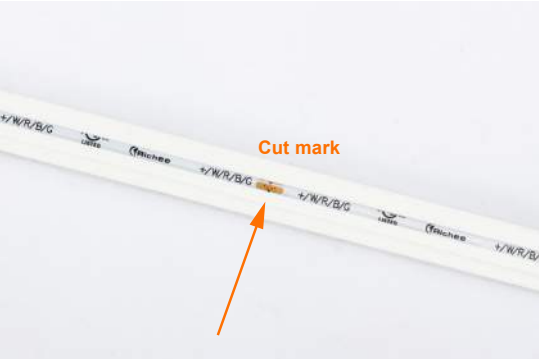
Power	Color	LM/ft	CRI	Input Voltage	Cutting length	Max Run
4.4W	RGB+3000K	N/A	>90	24V DC	2-3/16" (55.56mm)	16' 4-13/16" (5m)
	RGB+6000K	N/A	>90			

- The above color temperature values are the finished color temperature.
- The above data are typical values. Due to tolerances in the production process, characteristics of electronic components, and other factors, the test parameters will have an error of ±10%.
- The maximum serial connection length is for single-ended power input.
- For RGB/RGBW/RGBW/SPI, the maximum connection length refers to the recommended connection length of single-ended power supply when the LED strip is fully loaded. In practical applications, depending on the effect of the controller driving the LED strip, the serial connection can be extended as appropriate in the case of low power.

Wire

Wire type	Picture	Specification	Core number	Electrical property
PVC wire		22AWG black,white, blue, red, green 5 PIN		Black V+, white W, Blue B, Red R, Green G

Cut mark

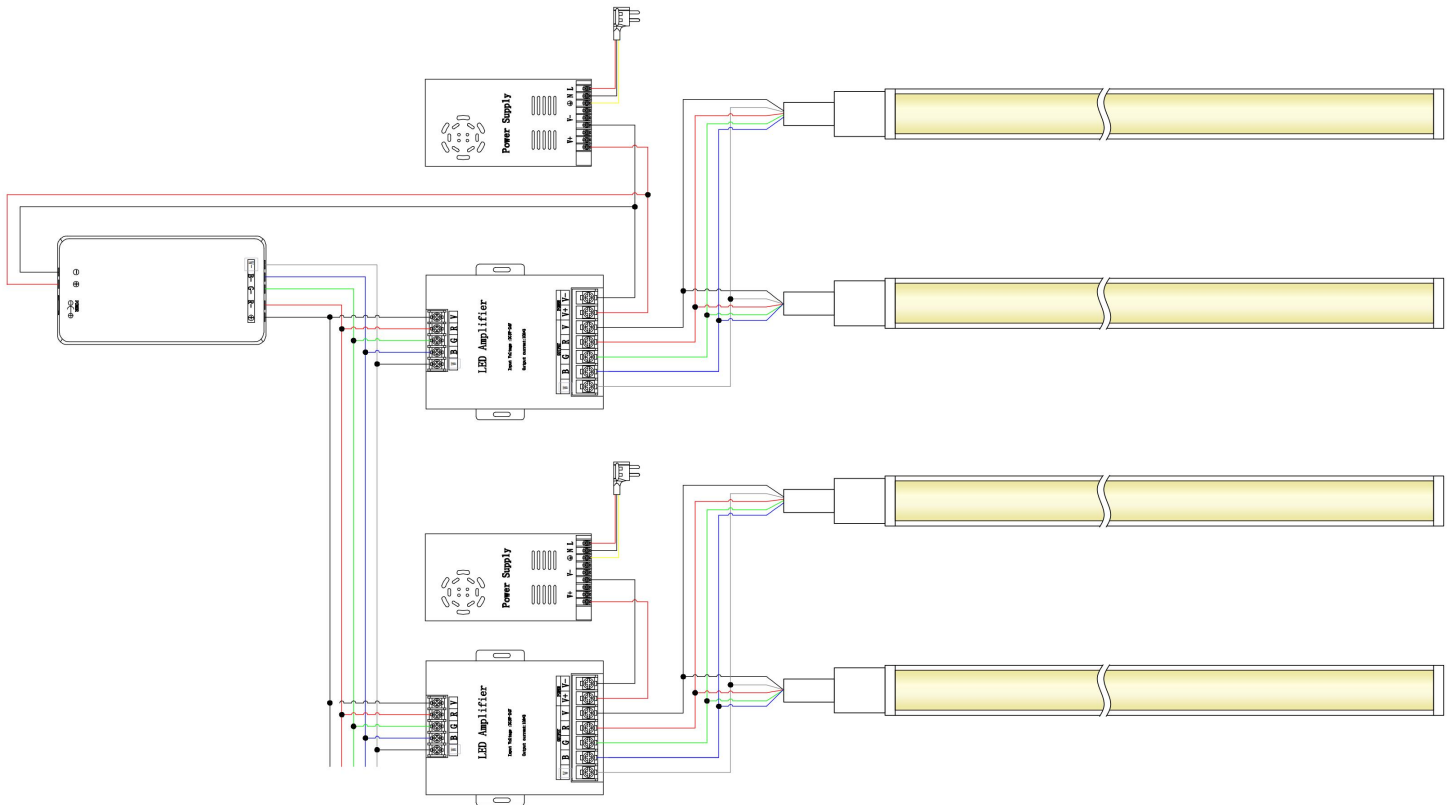


Remarks: There is a transparent window at the bottom of the LED strip, and the black mark is the cutting position;



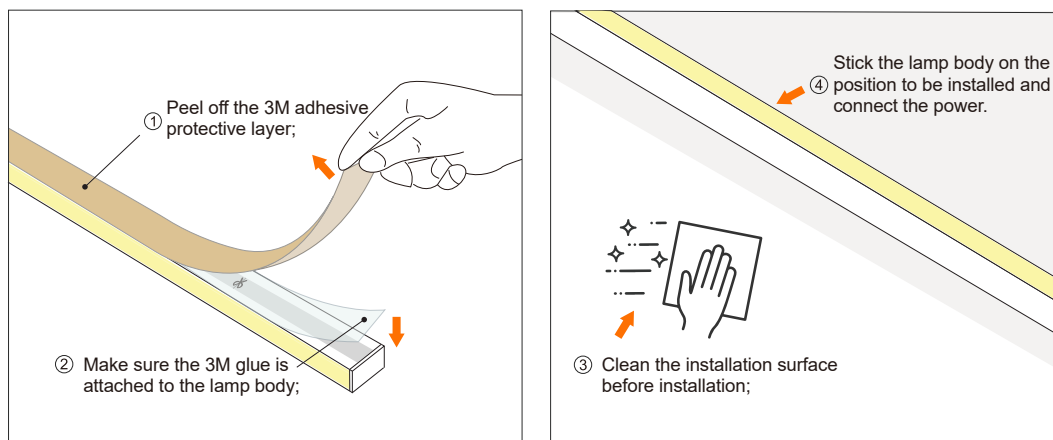
Make precise vertical cuts at the exact cut position of the LED strip.

RGBW wiring diagram

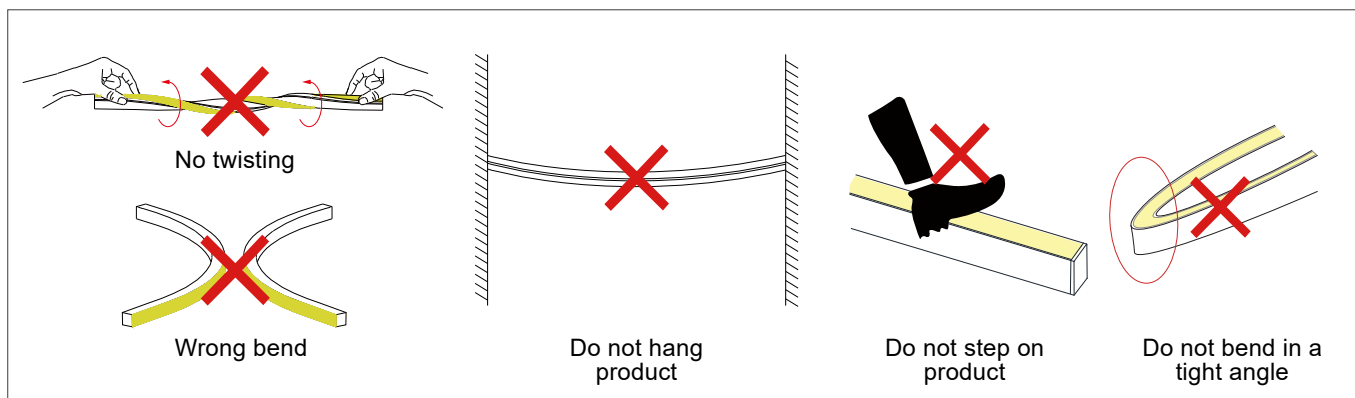


Installation diagram

Installation by
3M adhesive



Precautions



- ✘ Unused products and products that have not been used after unpacking should be sealed in packaging bags to avoid prolonged exposure.
- ✘ Please use DC24V isolated constant voltage switching power supply with ripple voltage less than 5%. Using other types of power supply may damage the product or cause other safety risks.
- ✘ In practical applications, the power supply should reserve 20% of the margin (recommended to use only 80% of the power) to ensure the stability of the power supply.
- ✘ It is recommended to connect the power supply wiring by professionals, and it is strictly forbidden to connect the power supply with electricity to prevent electric shock.
- ✘ Pay attention to the positive and negative poles of the power cord, and do not connect them incorrectly; whether the voltage of the power supply and the product is the same, so as to avoid damage to the product.
- ✘ When using multiple power supplies, avoid the situation where the positive poles of the power supplies are connected in parallel with each other, otherwise the power supply system will be unstable and long-term operation will result in damage.
- ✘ If the actual application length exceeds the specified use length, it will cause the lamp strip to be overloaded and heated, and the brightness will be uneven.
- ✘ Please avoid scratching, twisting and irregular bending of the product during installation, otherwise it may cause irreparable damage to the product.
- ✘ In order to ensure the life and reliability of the light strip, please do not be smaller than the minimum bending diameter specified by the product. Too small bending diameter will damage the product itself.
- ✘ In order not to hurt your eyes, try to avoid staring at the light-emitting surface of the light bar that is being lit for a long time.
- ✘ Non-professionals are prohibited from installing, disassembling and maintaining the product.
- ✘ It is strictly forbidden to use any acid or alkaline adhesive to fix the product (including but not limited to glass glue, etc.).
- ✘ Different IP grades of products have different usage scenarios, and IP65 is not suitable for water immersion environments.
- ✘ IP67 products are only factory-assembled, and the waterproof level needs to be downgraded when the user processes and cuts them by himself.
- ✘ Products of different sizes and specifications have a slight deviation in the final color due to structural differences under the same color temperature value, and must be confirmed before use.