

▼General description

Connectors for Beetle Clip (COB LED strip series.)

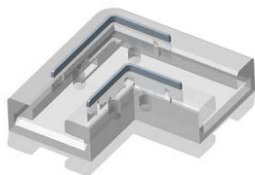
Newly ultra-narrow, invisible, seamless, uncovered. The new design not only provides the safest and quickest way to connect the strip, but also solves the problem of connection shadows caused by old-fashioned connectors and highly restores the original light efficiency of strips.

The new connector is suitable for quick installation of high density 240LEDs or more LED strips(including COB strips)& linear strips with aluminium groove, improving the flexibility of application and convenience on site when installing strips.

The innovative connection structure enables a better bite force for the connection between the strip and the connector, achieving a stable connection and not easy for the strip to come off.



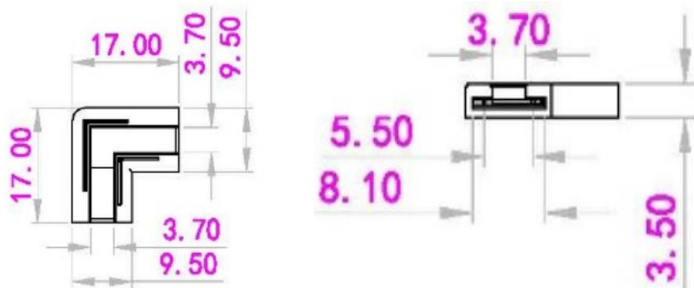
▼Item No.



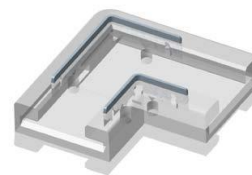
9541-8-L

Strip-to-strip, mainly suitable for IP20 COB & SMD strips, 8mm width PCB, 2PIN single color.

Rated current: 5.0A
Rated voltage(III/2): 0-36 V
Number of slots: 2
Contact spacing: **8MM 5.5 mm**
Colour: Transparent
Contact surface: Cu



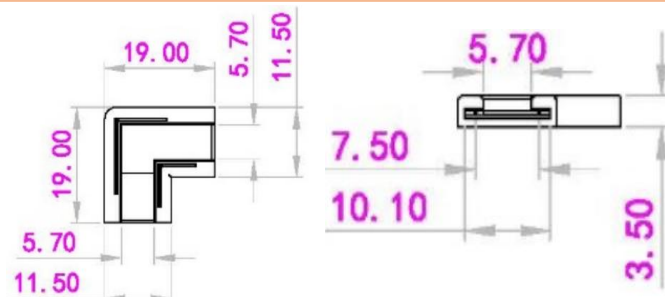
9541-8-L Dimensions



9541-10-L

Strip-to-strip, mainly suitable for IP20 COB & SMD strips, 10mm width PCB, 2PIN single color.

Rated current: 5.0A
Rated voltage(III/2): 0-36 V
Number of slots: 2
Contact spacing: **10MM 7.5 mm**
Colour: Transparent
Contact surface: Cu

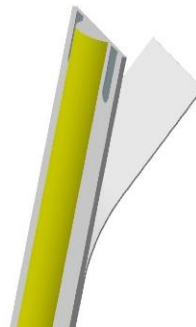


9541-10-L Dimensions

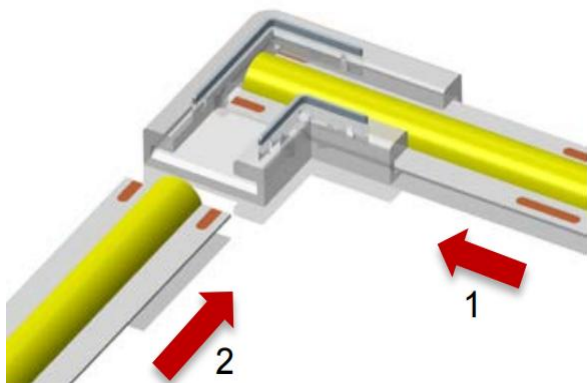
▼Installation



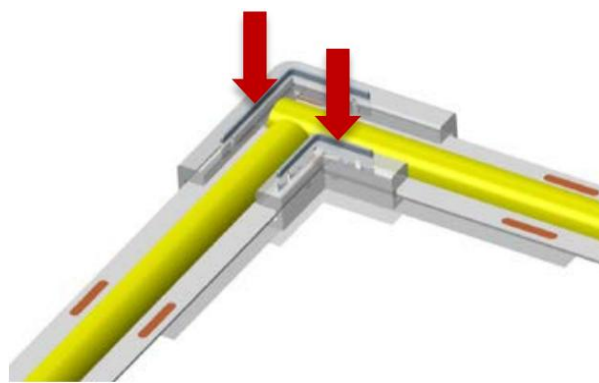
Step 1, Unfold the strip and cut it at the cuttable point to the desired length.



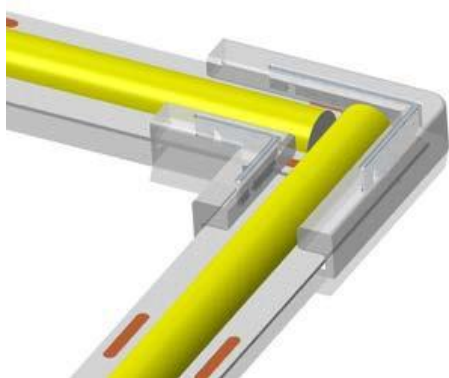
Step 2, Peel off the 3M tape.



Step 3, In order as shown in the diagram, insert strips into the transparent slot of the connector to the middle position after peeling off the adhesive tape on the back side of the strips. (Note: the positive and negative poles of the two strips should correspond to each other.)



Step 4, Press the hardware to the bottom with a tool (electrician's pliers) after inserting strips in both sides aligned to the middle position.



Step 5, Finished.

Note: When connecting strips to strips, the positive and negative poles of the strips should correspond to each other. (Positive poles corresponds to positive poles.)

▼Disclaimers

Information is subject to change without notice. No responsibility is accepted for errors of omission. Information used should be ensured to be the latest.

▼Technology & Parameters

Shell: Polycarbonate

Contact piece: Environmental friendly hardware material high precision copper

Contact piece surface processing: environmentally anti-corrosion processing

Rated voltage: 0-36V

Rated current: less than 5.0A

Note: As to connectors with wires, please refer to the maximum wire current.

Working temperature: -10 °C~45 °C

Temperature resistance: 105°C for rubber housing

Flame retardant grade: UL-94-V0

Application: 8 mm& 10 mm width, bare board, single colour, 240LEDs/m or more COB LED strip

Flexible PCB: electroplated board (not suitable for lead plates), 0.25mm to 0.35mm thick

In order to prevent discolouration of the connector, deterioration of availability and abnormalities during assembly and use, the following storage conditions need to be observed.

1. High temperatures and humidity can cause discolouration, so it is recommended that the products be stored in an environment with temperature and humidity control.
2. Please try the products within 6 months of delivery and they are valid for 1 year.
3. The raw material of the connector is very easy to absorb moisture. in the state of moisture absorption if the temperature changes sharply, the outer body colour will change. It is recommended to store them in a ventilated and dry environment, avoiding sunlight.