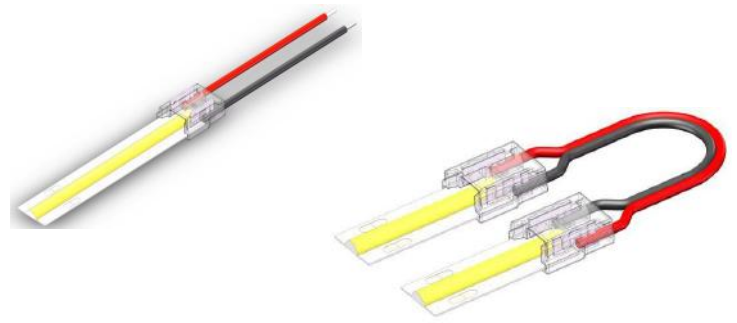
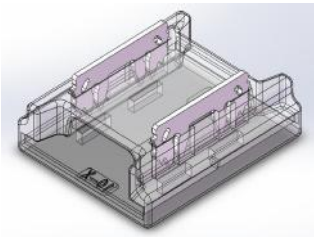


▼ General description

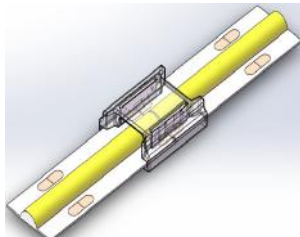
Mini Crystal LED strip connector is a transparent PC material connector, mainly suitable for IP33 COB & few SMD strip with matching pads. It has the characteristics of reliable connection, invisible seamless lighting, perfect solution for aluminum profile application, and DIY connection without stripping.



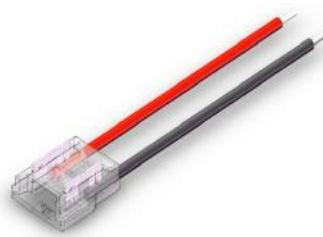
▼ Item No.



9541



9542



9543

Strip-to-strip, mainly suitable for IP20 COB & SMD strips, 10mm width PCB, 2PIN single color

Strip to 15cm Wires, mainly suitable for IP20 COB & SMD strips, 10mm width PCB, 15CM 20AWG Wires, 2PIN single color

Strip to Strip (With 15cm Wires), mainly suitable for IP20 COB & SMD strips, 10mm width PCB, 20AWG Wires, 2PIN single color

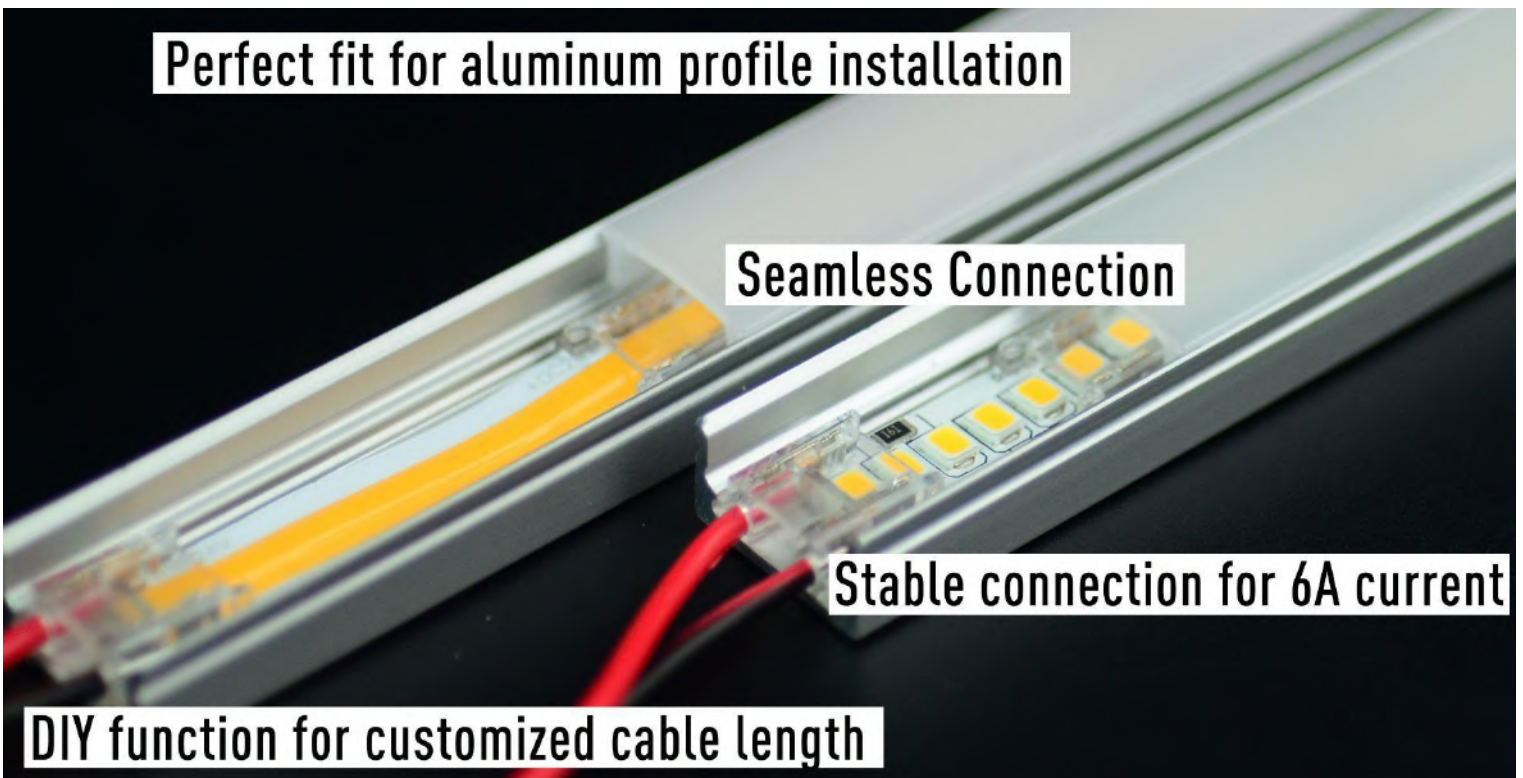
▼ Product advantages

Perfect fit for aluminum profile installation

Seamless Connection

Stable connection for 6A current

DIY function for customized cable length

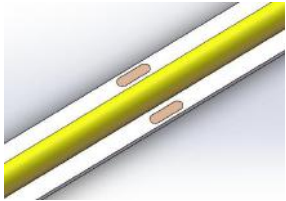


High transparent
PC material, good
light transmission

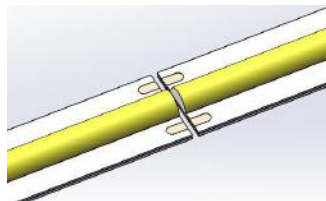
Guide slot introduction,
anti-shake, more reliable fixed
connection

▼ Instruction

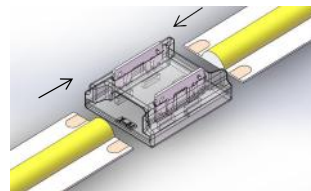
Item No. 9541



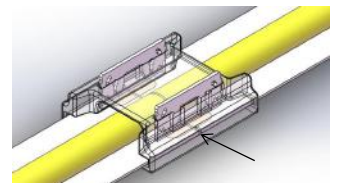
1. Prepare strip



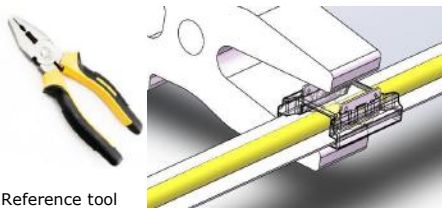
2. Cut the led strip along the pad



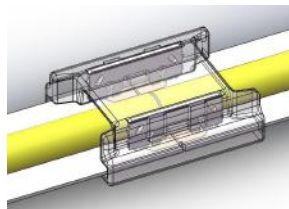
3. Push the strip into the connector from both sides



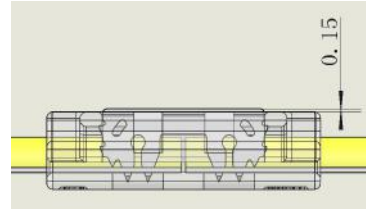
4. The arrow shows the stop position, push it to this position in place



Reference tool



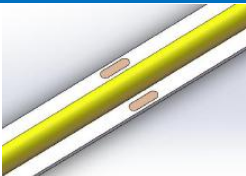
5. Use pliers to clamp the terminal to the level of the plastic surface, the operation is unilateral operation, clamp one side and then operate the other side.



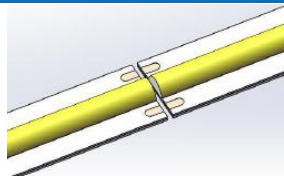
6. Finished

Remark: After pressing in, the contact terminal is allowed to be 0.15 MAX higher than the plastic plane.

Item No. 9542 & 9543



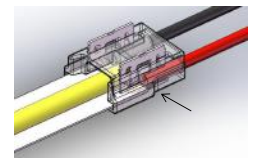
1. Prepare strip



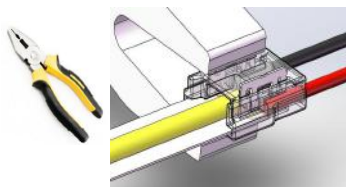
2. Cut from the middle of the pad



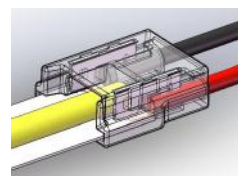
3. Prepare wires



4. Push the strip in to the connectors



6. Use pliers to clamp the terminal to the level of the plastic surface, the operation is unilateral operation, clamp one side and then operate the other side.



7. Finished

Note: After pressing in, the contact terminal is allowed to be 0.15 MAX higher than the plastic plane

