

# LED Strip Light



## Description:

The 1940 LED Linear Strip Light utilizes high quality LED chips that allow high brightness and long service life. This fixture uses 80% led energy than equivalent traditional light bulbs. The lampshade adopts PC materials that are durable and resistant to ultraviolet light. It will not yellow after long-term use. The PC gets rid of glare, emits soft light, and is non-dazzling. The driver has an input voltage of 100-277V AC and it is instant-on which means that the LED fixture will reach 100% brightness when it is turned on.

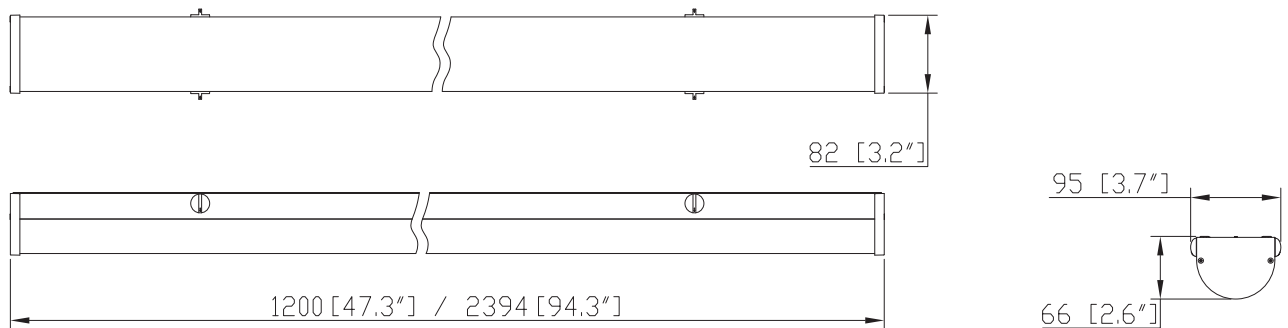
## Features:

1. This LED fixture can also save energy by having a lower heat emission than traditional fluorescent fixtures.
2. The frosted lampshade allows for uniform and soft light emission without dazzling.
3. Installation with buckles makes installation fast and easy.
4. Good LED color indexing prevents eye fatigue.
5. Category I protection grade against shock.
6. Static matte spraying.
7. Normal use environment: - 20 ~ 45°C
8. 0-10V dimming, emergency back-up, motion sensor optional.

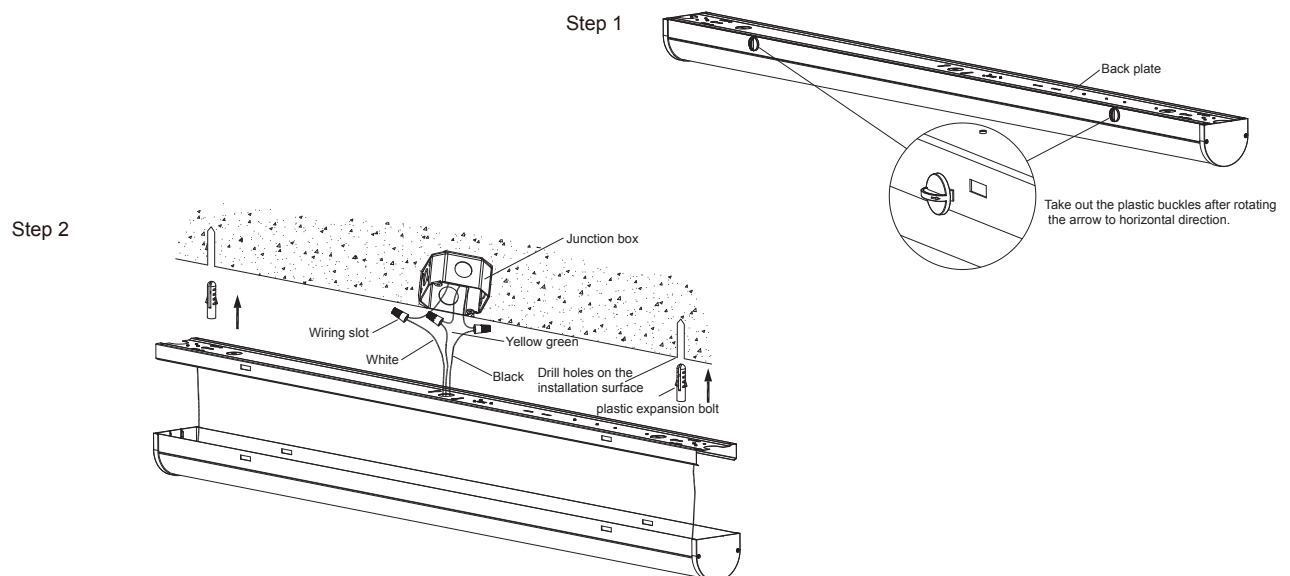
## Technical parameters:

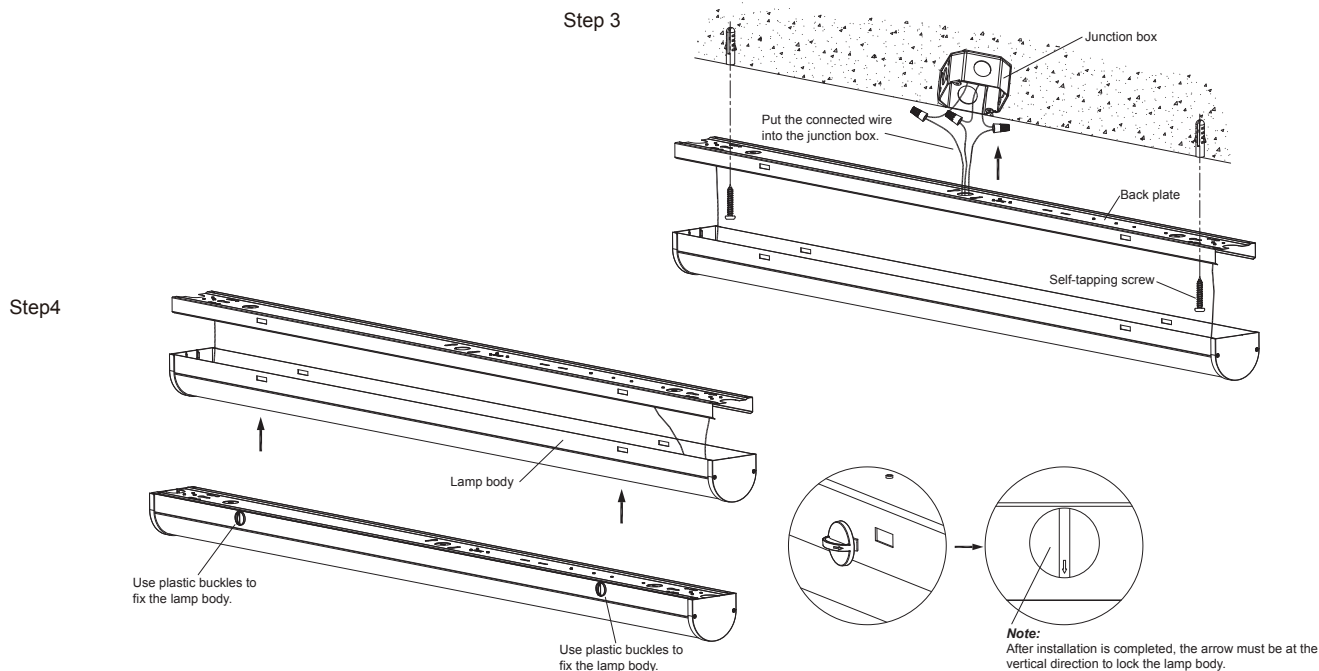
Length	Model number	Color	CCT	Light output(Lm) ( $\pm 10\%$ Lm)	LED Q'ty	LED type	Ra	Power(W)	Rated power
4 Ft	1940-30K	Warm White	2800-3100K	4120	120	2835 SMD	$\geq 80$	36	AC100-277V 50/60Hz
	1940-40K	Neutral white	3800-4250K	4200					
	1940-50K	White	4750-5300K	4275					
	1940-60K	White	5700-6500K	4275					
8 Ft	1941-30K	Warm White	2800-3100K	7480	240	2835 SMD	$\geq 80$	68	AC100-277V 50/60Hz
	1941-40K	Neutral white	3800-4250K	7500					
	1941-50K	White	4750-5300K	8020					
	1941-60K	White	5700-6500K	8020					

## Dimension: (Unit:mm/ft)



## Installation





### 1. Take out the back plate

Take out the back plate by rotating the plastic buckles of the lamp body on the side.

### 2. Fix the wiring connection of the rubber plugs

Drill 2 holes on the installation surface and hammer the plastic expansion bolt into the hole and ensure that the plastic expansion bolt does not fall off. Prize up the reserved holes on the back plate and thread the power cord through the lamp. Use wiring cap to connect with the power supply. The black is connected with the live line; the wire is connected with the null line. The yellow green line is connected with the grounding line.

### 3. Fix the back plate

Put the connected wire into the junction box. Then use self-tapping screws to lock it on the installation surface tightly.

### 4. Fix the lamp body

Use four plastic buckles to fix the lamp body on the back plate. Put the buckles into the square holes to rotate 90 degrees (note: after installation is completed, the arrow must be at the vertical direction to lock the lamp body).

## Notice:

1. Please read instructions carefully before use to ensure operating conditions meet the requirements of product use and related technical specifications;
2. After connect to power, prohibit contacting any metal and lamp to avoid electric shock;
3. After unpack or before use, please check whether the light is damaged during transportation. If any, please stop using and notify supplier, and the product can only be used in intact condition;
4. To ensure the safety of products, Please perform product installation and operation according to the instruction strictly; the supplier is not responsible for any loss caused by illegal operation.