

# **FASHION BATTEN LED LUMINAIRES SPECIFICATION**

Item: 3140-30K

3140-40K

3140-50K



- ETL & DLC listed model.
- Emergency and Dimmable can free choose.
- Two Different Installation: Ceiling Mount And Hanging
- High luminous efficiency, low power consumption, energy saving up to 80% than traditional fluorescent fixture, more than 50% energy saving than energy-saving lamps.
- High quality precision coating. Excellent heat dissipation.
- 50000hrs long life-span, 3 years warranty.



## Application



Hanging mounted

*Strong and durable*  
*Ultrathin shape design*

*Plug and Play*  
*Easy Installation*  
*Long Life-Span LED*  
*Low-power dissipation*



**Average life**  
**50,000 hours**

**IP20**  
**rated**  
**fitting**

**Luminous**  
**Efficiency**  
**of up to**  
**110lm/w**

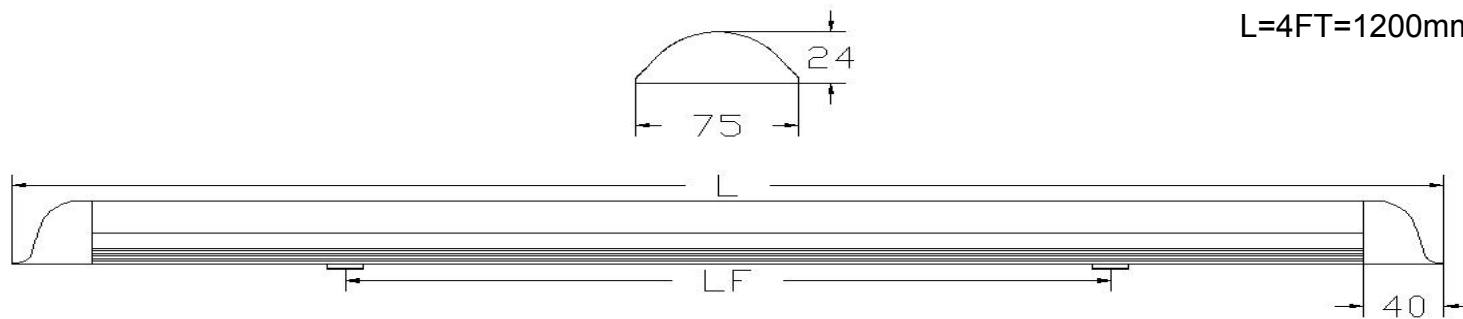
**3000K**  
**-**  
**6000K**

**Dimensions:**  
**4 ft (length) x**  
**2.95 in (width) x**  
**1 in (depth)**

## Parameters&Dimension

| Model | Wattage | Size | Input Voltage       | Certification | Operation Condition | IP Grade | Max Connection (@220Vac) |
|-------|---------|------|---------------------|---------------|---------------------|----------|--------------------------|
| 3140  | 40W     | 4FT  | 100-277Vac, 50/60HZ | CE,ROHS       | -20°C~40°C          | IP20     | 12PCS                    |

| Photometric |             |
|-------------|-------------|
| LED         | LM-80 SMD   |
| Luminance   | >110LPW     |
| CRI         | 82Ra        |
| R9          | 6           |
| CCT         | 3700K-6500K |
| Beam angle  | 120°        |



| Basic Specification |                         |
|---------------------|-------------------------|
| Driver              | Built-in                |
| PF                  | 0.9                     |
| Body Material       | Aluminum (Silver/White) |
| Life Span           | 50000 Hrs               |
| Warranty            | 3 years                 |

# Lighting Design&Accessories:

Wide PCB board with LM-80SMD  
Good heat dissipation



Using Constant current driver. Not cheap IC Driver .

Strong metal clips for reliable installation



**1set include these accessories:**

2PCS strongly ceiling mounting metal clips;

1PCS input cable;

Screws

# Linkable • Feature



**Male-female design**

Please use and end cap for safe installation.



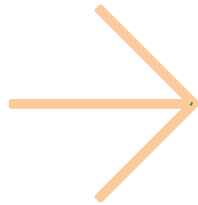
## 1 set include these accessories:

- 2PCS strongly ceiling mounting metal clips;
- 1PCS Input cable;
- 1PCS Middle connector;
- 1PCS Tail Plug;
- Screws





## Suspension Installation Guide:



## !WARNING!

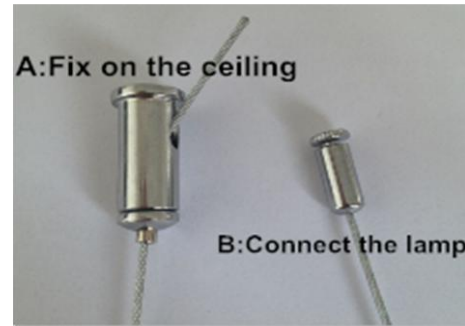
WARNING:RISK OF ELECTRICAL SHOCK.TURN OFF POWER BEFORE INSTALLING,REMOVING OR INSPECTING.

WARNING:ALL WIRING TO BE PERFORMED IN ACCORDANCE WITH ELECTRICAL CODE AND LOCAL ELECTRICAL CODE

WARNING:RISK OF FIRE.FIXTURES ARE RATED FOR USE IN 100-277Vac,50-60HZ PROTECTED CIRCUIT AND 90°C RATED SUPPLY WIRE.

WARNING:RISK OF CUT.THE ENCLOSED PRODUCT MAY HAVE SHARP EDGES,WEAR GLOVES TO PREVENT CUTS WHEN HANDING,REMOVING,INSTALLING AND MAINTAINING THIS PRODUCT.

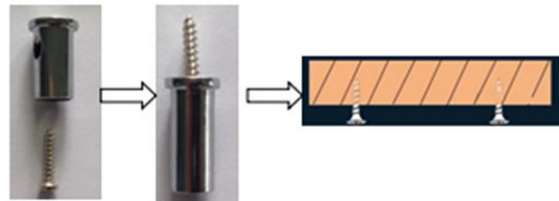
Step 1:Identify the rope two terminals



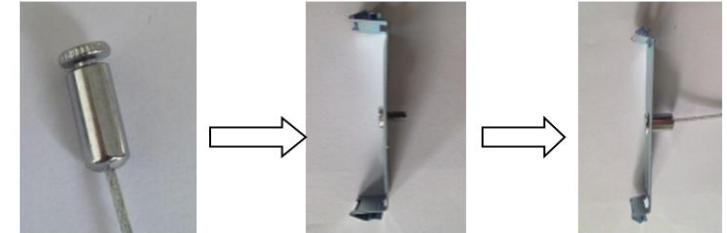
Step 2:Loosen A terminals



Step 3:Fix the screw on the ceiling wall for pendant rope.



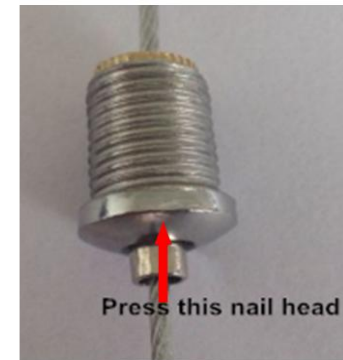
Step 4:Loosen B terminal ,connect the clamp and rope together



Step 4:clip the lamp and clamp together.Same step for other clamp



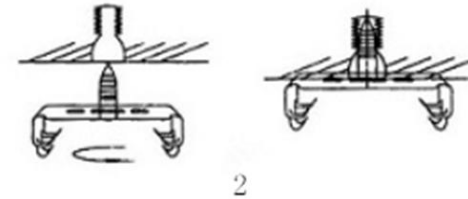
Step 4:Adjust the rope length.Then finish installation.





Step 1:Corresponding Installation Position,Set a Suitable Clamp Position.

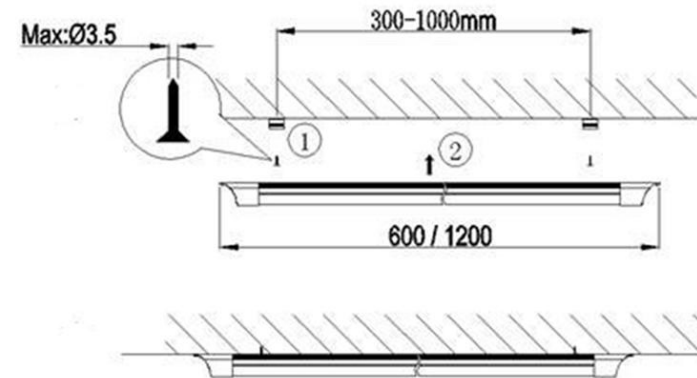
Step 2:Pushing holes for screw at the surface of the installation platform,install the screw and suspension parts,use the screw to fix the suspension part.



Step 3:Lock the one side of lamp body to the fixture,then other side.



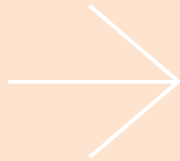
Step 4:Check the lamp is located firmly.



Ceiling Installation Guide:



\*1set include these accessories:  
2PCS ceiling mounting metal clips;  
1PCS input cable;  
screws



# Thanks for Reading New Products Are Coming Soon.....



[www.richeelighting.com](http://www.richeelighting.com)



[richeelighting@gmail.com](mailto:richeelighting@gmail.com)



(213) 814-1638



1600W Washington Blvd., Los Angeles, CA 90007