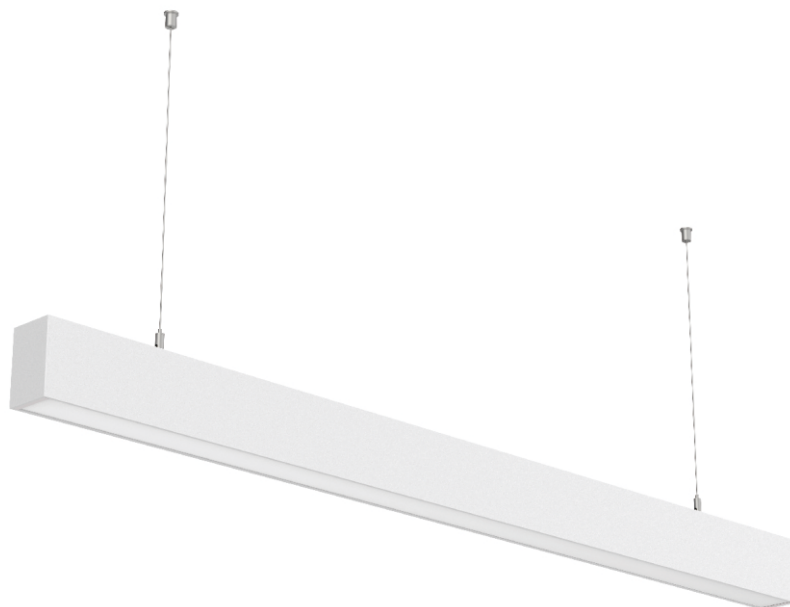


# LED Linear Light

3146 Continuous Light (0-10V Dimming)

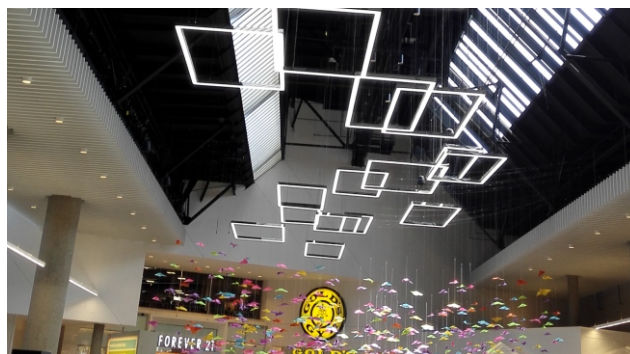


## Description

The 3146 series can be combined to create larger continuous linear light systems. It is convenient to dismantle and maintain. Both the power supply and LED module can (PCB+LEDs) are easily replaceable. All connections are IP40 waterproof, it can be widely used in homes, schools, shopping malls, hotels, and other indoor public areas.

## Applications

Can be widely used in homes, school, shopping mall, hotel and other indoor public places.



## Features

1. The product can operate in single runs or continuous runs seamlessly. At 277V AC the max run is 3600W ( 350 ft). At 110V AC the max run is 1500W (150 ft).

2. The lamp and power supply are connected via a high voltage connector. It is very easy to install and disassemble, it is also safe and reliable.

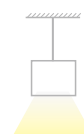
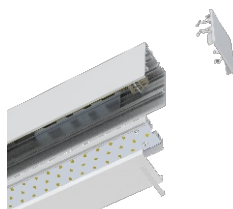
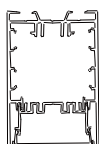
3. Lamp body consists of a 6063 aluminum profile with finishes available in white, black, and silver.



4. 6063 aluminum profile has great heat distribution. And the PC diffuser has a high light efficiency.

5. The end cap, power supply, and light emitting parts can be disassembled. It is easy to maintain.

6. 2 installation methods: suspended and surface mounted.



Suspended installation



Surface Mount installation

7. Multiple jointing can be achieved via " + " " L " shape connecting light fixtures and accessories.



## Lamp body

Model	CCT	LED Type	LED pcs	Lumen(lm) (±10%)	Power(W) (±10%)	Length (feet)	Voltage (V)	Dimming Optional	Pre-wired
3146-4-XX-50K	5000K	2835	260	4320lm	40W	4	AC100-277V 50/60Hz	0-10V Dimming	5 wires, 14AWG copper core,L,N,G, DIM+,DIM-
3146-4-XX-40K	4000K		260	4280lm	40W	4			
3146-4-XX-30K	3000K		260	4120lm	40W	4			
3146-8-XX-50K	5000K	2835	462	7875lm	75W	8			
3146-8-XX-40K	4000K		462	7725lm	75W	8			
3146-8-XX-30K	3000K		462	7650lm	75W	8			

## “L” shape lamp

Model	CCT	LED Type	LED pcs	Lumen(lm) (±10%)	Power(W) (±10%)	Length (feet)	Voltage (V)	Dimming Optional	Pre-wired
3146-L-XX-50K	5000K	2835	216	4280lm	40W	2*2	AC100-277V 50/60Hz	0-10V Dimming	5 wires, 14AWG copper core,L,N,G, DIM+,DIM-
3146-L-XX-40K	4000K		216	4120lm	40W	2*2			
3146-L-XX-30K	3000K		216	4080lm	40W	2*2			

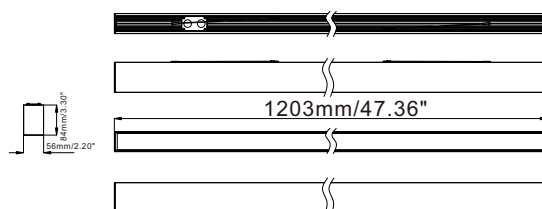
## “+” shape lamp

Model	CCT	LED Type	LED pcs	Lumen(lm) (±10%)	Power(W) (±10%)	Length (feet)	Voltage (V)	Dimming Optional	Pre-wired
3146-+-XX-50K	5000K	2835	216	4400lm	40W	2*2	AC100-277V 50/60Hz	0-10V Dimming	5 wires, 14AWG copper core,L,N,G, DIM+,DIM-
3146-+-XX-40K	4000K		216	4320lm	40W	2*2			
3146-+-XX-30K	3000K		216	4240lm	40W	2*2			

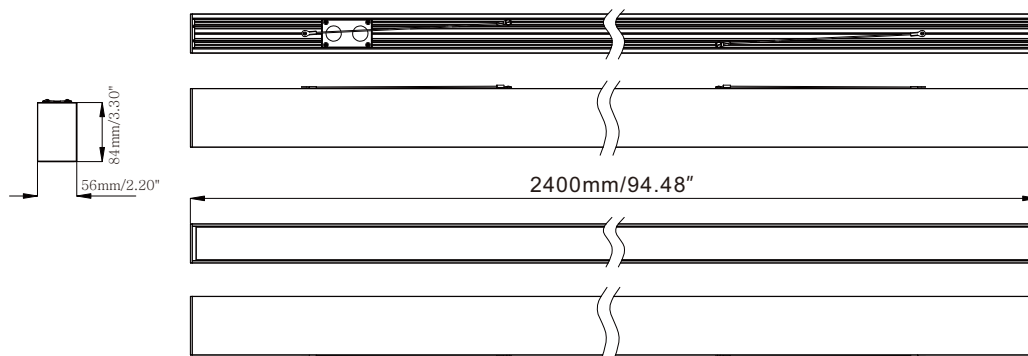
Beam angle	Energy saving	PF	CRI	IP	Life span	Lamp material
110°	90%	>0.95	≥80	IP40	50000hrs	Aluminum alloy+PC

Remark: 3500K and 4500K available for special order

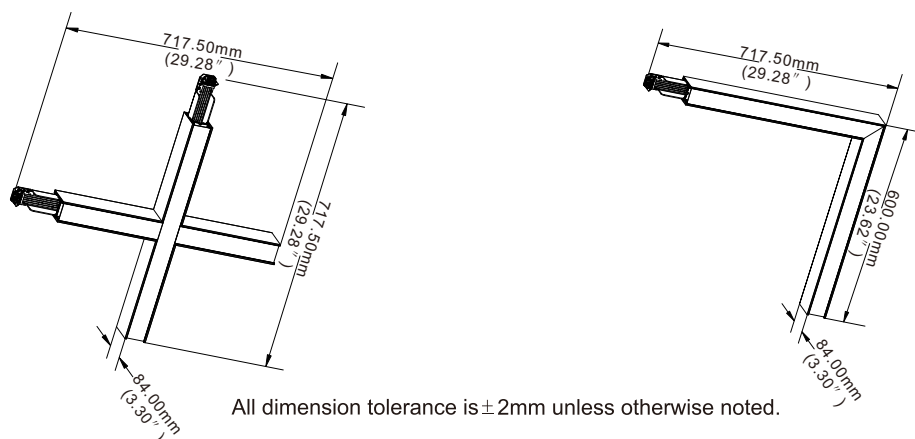
## Dimensions(Unit:mm/inch)



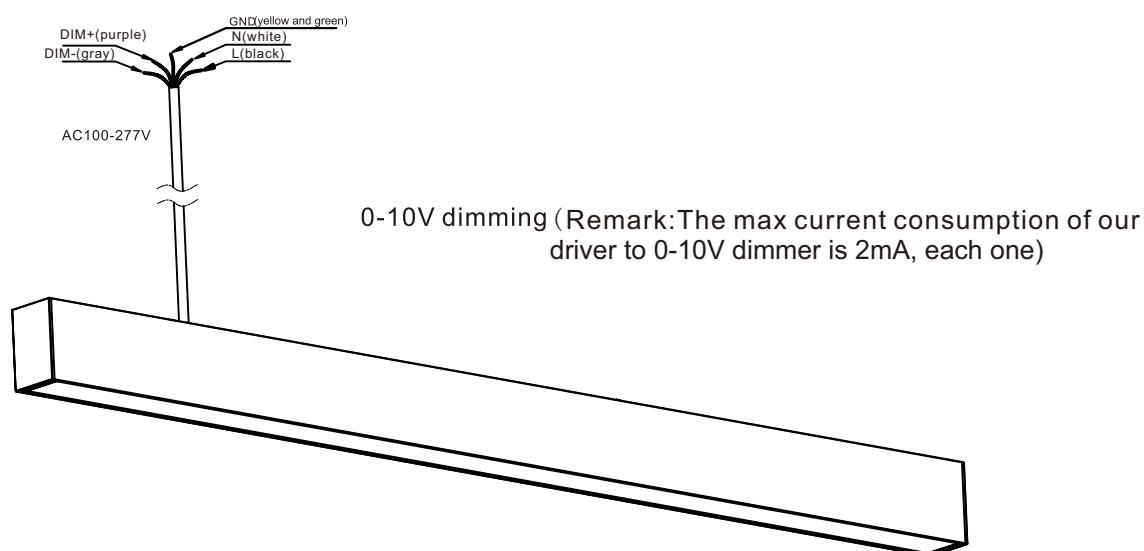
All dimension tolerance is ± 1mm unless otherwise noted.



All dimension tolerance is ± 2mm unless otherwise noted.

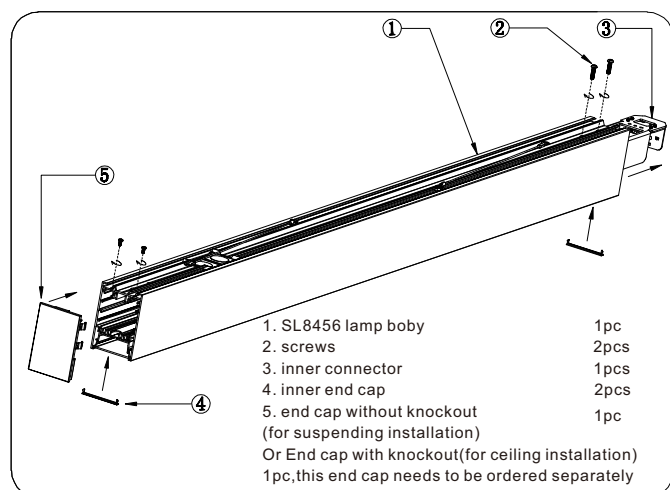


## Electrical Connection



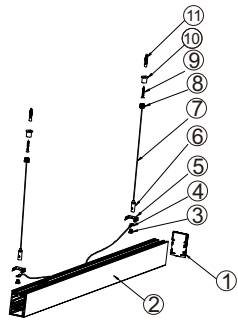
## Installation instruction

### How to make the first run?



First, loose the 2 screws at the lamp end, and pull out the inner connector from the lamp body, then fix the inner connector by 2 screws again. After finishing the wiring connection (see the steps on the continuous connection), fix the end cap by screws and insert the inner end caps at both sides.

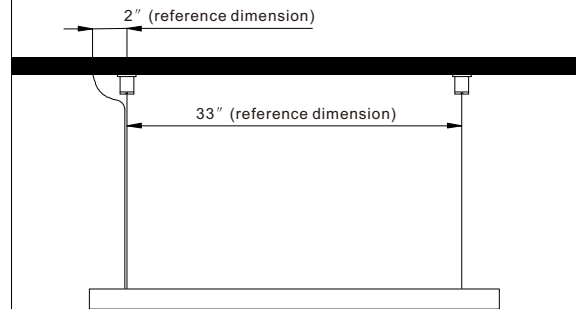
### Exploded drawing of the end run



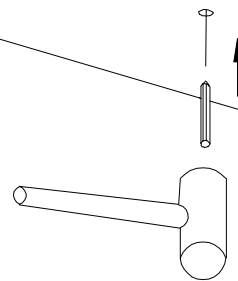
#### Lamp BOM

1. 3146 end cap	1PC
2. 3146 lamp	1PC
3. square head screw	2PCS
4. safety rope	2PCS
5. clamp	2PCS
6. wire lock	2PCS
7. suspender rope	2PCS
8. fixing head 1	2PCS
9. 4X30PA screw	2PCS
10. fixing head 2	2PCS
11. rubber plug	2PCS

### Installation diagram

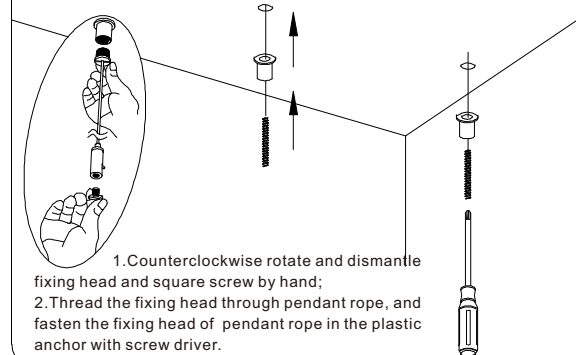


### Drill hole



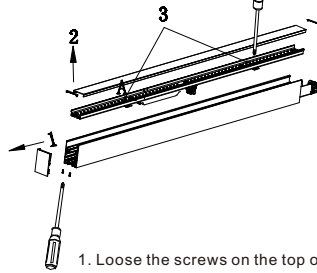
Drill hole according to corresponding dimension, and hammer the rubber plug into hole.

### Disassemble pendant rope and fasten fixing head of pendant rope



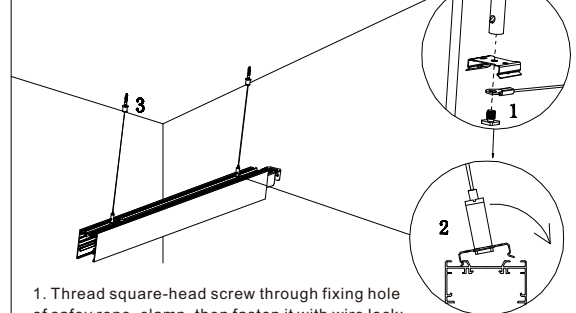
1. Counterclockwise rotate and dismantle fixing head and square screw by hand;
2. Thread the fixing head through pendant rope, and fasten the fixing head of pendant rope in the plastic anchor with screw driver.

### Install the first run-disassemble lamp body



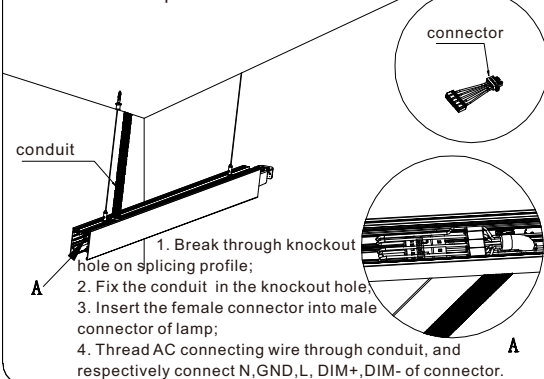
1. Loose the screws on the top of end cap with screwdriver; and pull the end cap out with hand;
2. Dismantle inner side cover and PC cover;
3. Rotate two screws of fixing card counter-clockwise by 90°, and dismantle cooling panel.

### Install shell of the first run lamp body



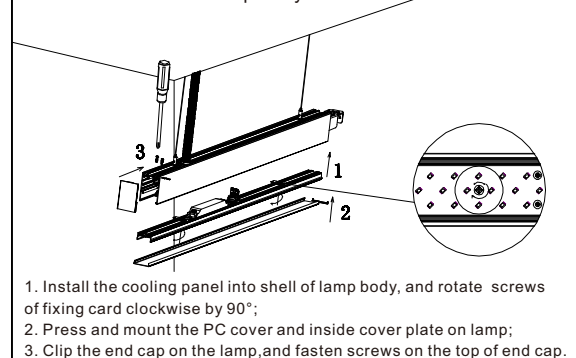
1. Thread square-head screw through fixing hole of safety rope, clamp, then fasten it with wire lock;
2. Snap the clamp into profile slot;
3. Tightening the lamp with fixing head 1 and fixing head 2.

### Connect the input cable



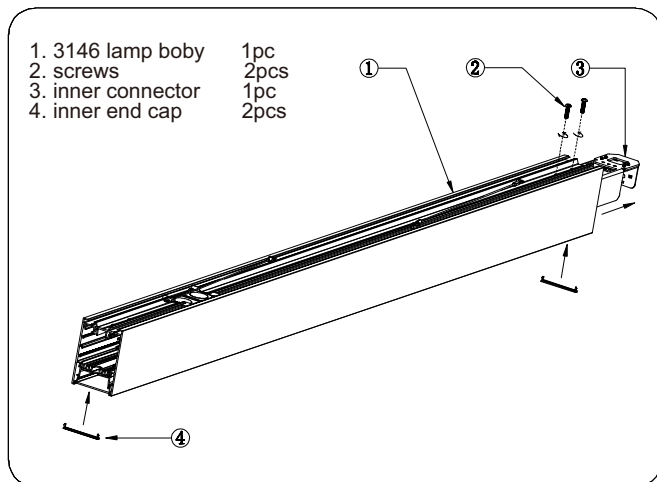
1. Break through knockout hole on splicing profile;
2. Fix the conduit in the knockout hole;
3. Insert the female connector into male connector of lamp;
4. Thread AC connecting wire through conduit, and respectively connect N, GND, L, DIM+, DIM- of connector.

### Install the first run lamp body



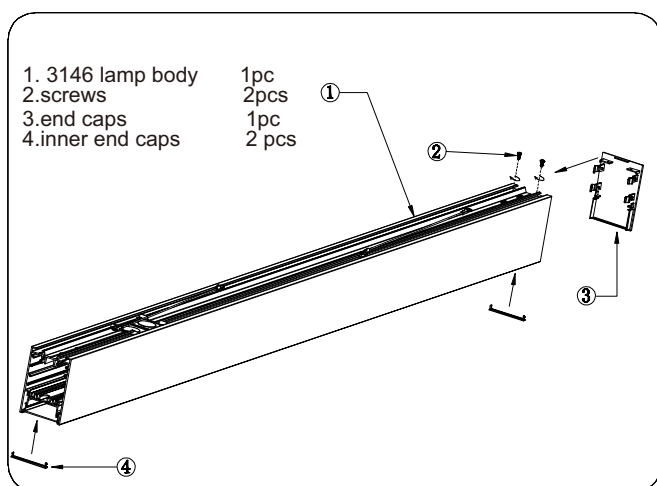
1. Install the cooling panel into shell of lamp body, and rotate screws of fixing card clockwise by 90°;
2. Press and mount the PC cover and inside cover plate on lamp;
3. Clip the end cap on the lamp, and fasten screws on the top of end cap.

## How to make the middle run?



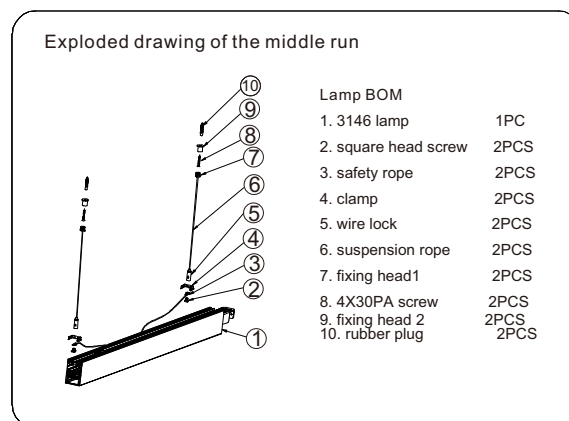
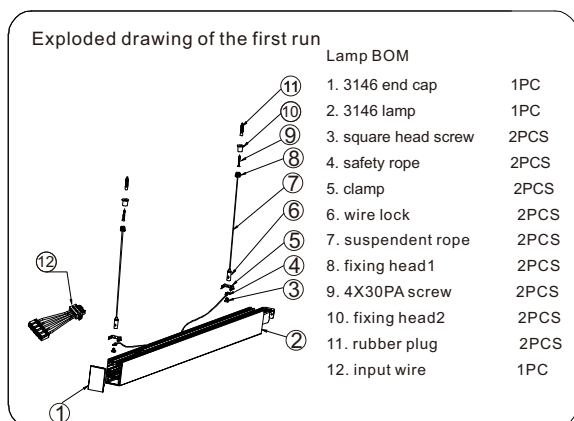
loose the 2 screws at the lamp end, and pull out the inner connector from the lamp body, then fix the inner connector by 2 screws again, insert the inner end caps at both sides.

## How to make the last run?

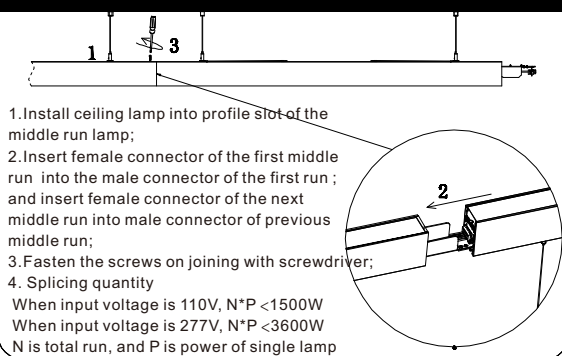


Just fix the end cap at the last end by screws, and insert the two inner end caps.

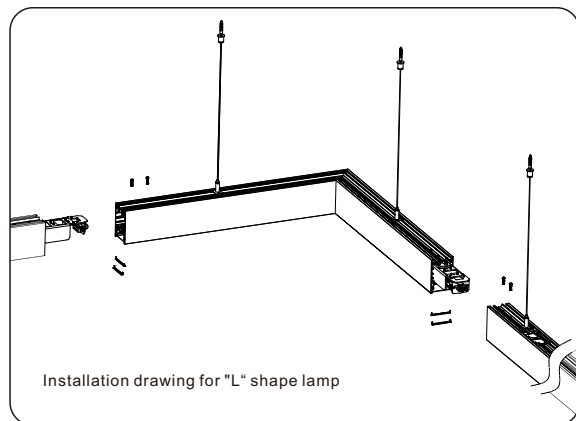
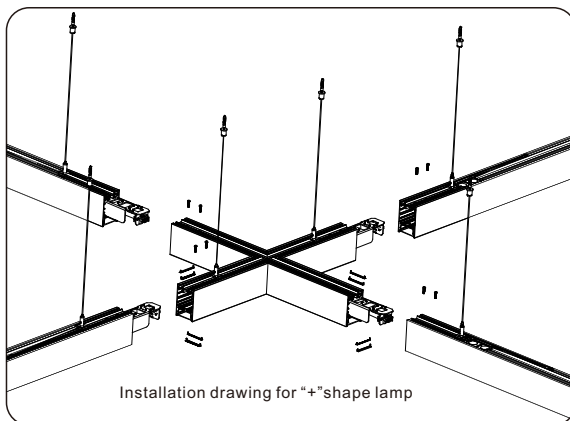
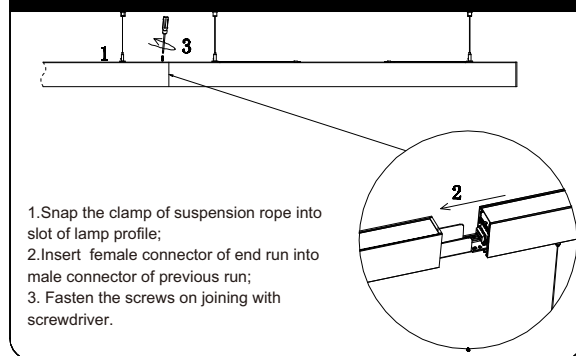
## Suspended Installation Instructions



### Install lamp body of the middle run

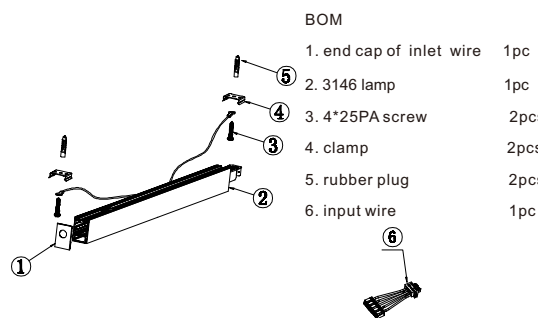


### Install lamp body of the end run

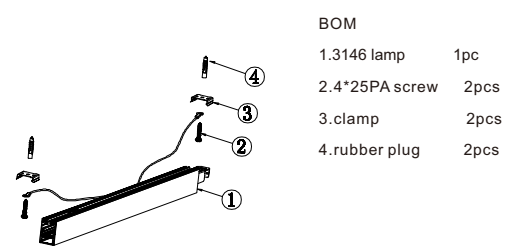


## Ceiling Installation Instructions of SL8456

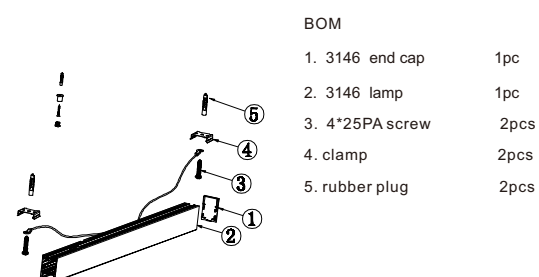
### Exploded drawing of the first run



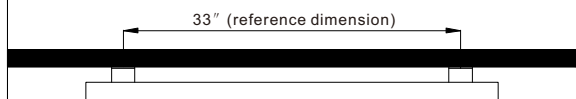
### Exploded drawing of the middle run

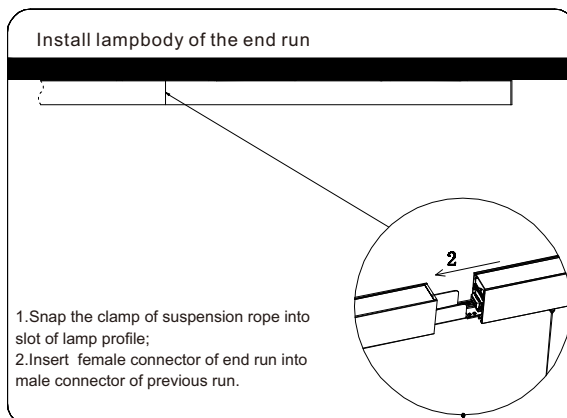
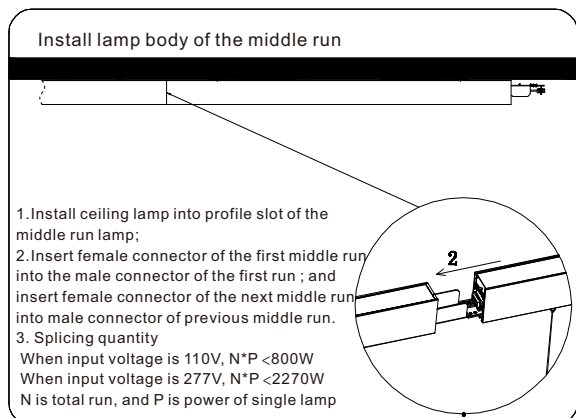
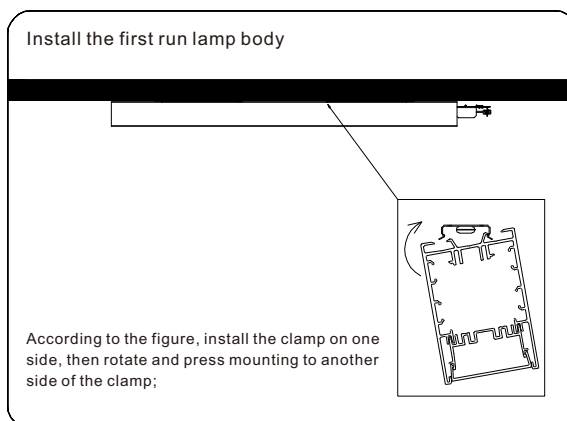
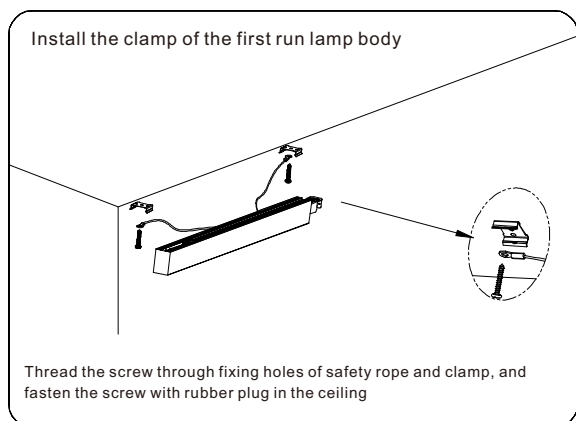
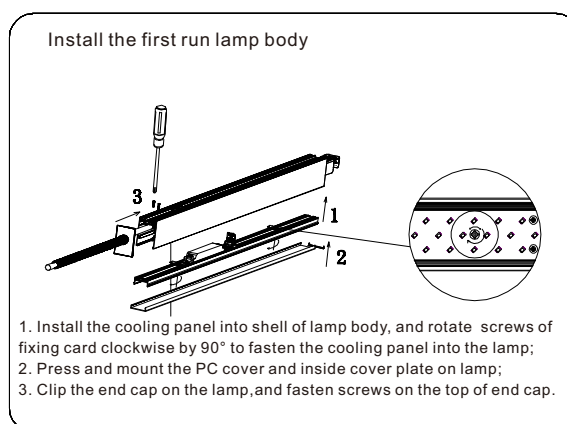
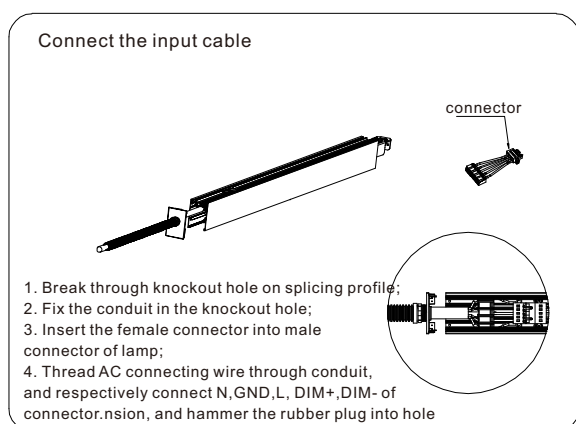
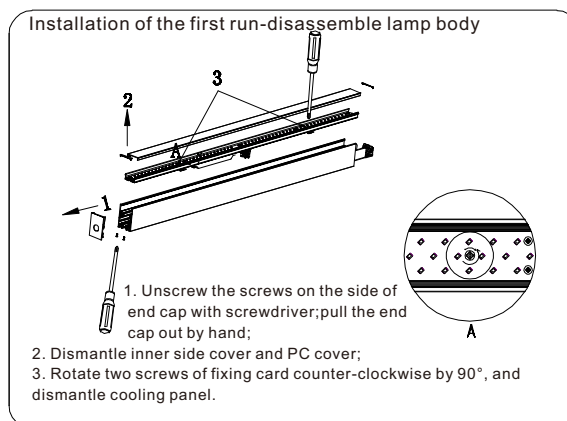
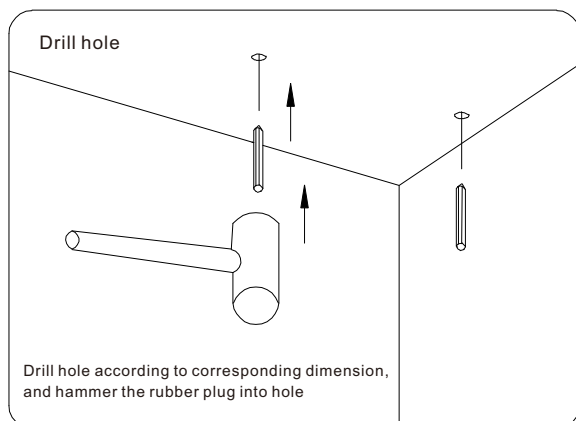


### Exploded drawing of end run



### Installation diagram





## Product packaging information:

1.2m lamp:	2.4m lamp:
<ul style="list-style-type: none"><li>● net weight/pc:3.24kg</li><li>● gross weight/CTN:24.8kg</li><li>● inner size: 1274*130*106mm</li><li>● carton size: 1288*404*230mm</li><li>● 1pcs/inner box,6 inner boxes/ carton</li></ul>	<ul style="list-style-type: none"><li>● net weight/pc:6.5kg</li><li>● gross weight/CTN:33kg</li><li>● inner size: 2448*133*106mm</li><li>● carton size: 2462*413*230mm</li><li>● 1pcs/inner box,4 inner boxes/ carton</li></ul>
“L” lamp	“+” lamp:
<ul style="list-style-type: none"><li>● net weight/pc:3.294kg</li><li>● gross weight/CTN:16.631kg</li><li>● inner size: 735*105*683mm</li><li>● carton size: 750*225*701mm</li><li>● 2pcs/inner box,2 inner boxes/ carton</li></ul>	<ul style="list-style-type: none"><li>● net weight/pc:3.667kg</li><li>● gross weight/CTN:9.818kg</li><li>● inner size: 632*105*566mm</li><li>● carton size: 647*225*584mm</li><li>● 1pcs/inner box,2 inner boxes/ carton</li></ul>

## Notice

1. Please read the specification first, to make sure the service environment matches the condition in the specification before using.
2. Please confirm the input voltage, frequency before using.
3. The lamp must be installed by professional personnel
4. If there is any damage on the power line or the shell of the product, it should be taken as defective product and do not use it.;
5. Dangerous high voltage, Non-professionals are not allowed to maintain the products.
6. If the exterior flexible cable or wire is damaged, it must be exchanged by the supplier, its agent or other similar qualified personnel to avoid dangers.