



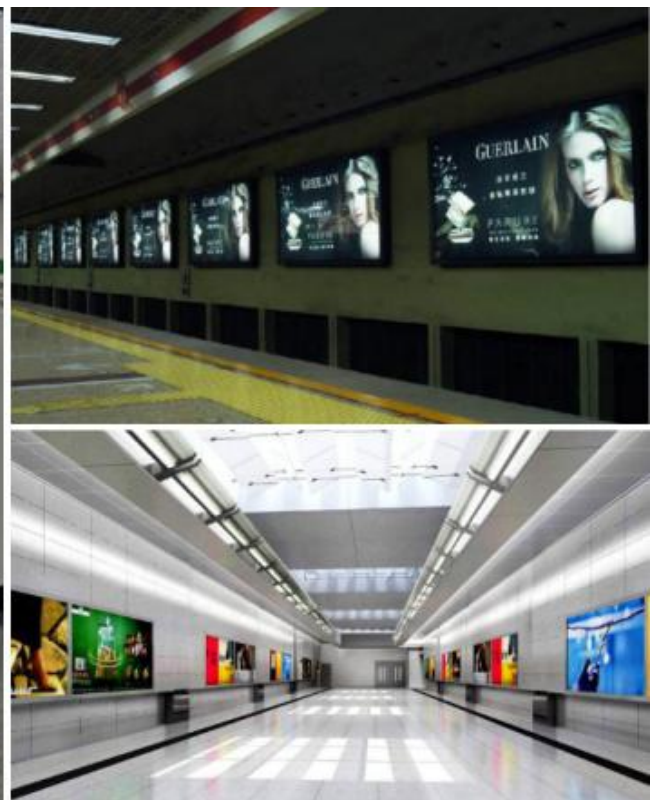
High Power LED Rigid Bar Specifications (5045)

Specification:

Our led rigid bar uses high power LED chip XPE ENCAPSULATION mode as a lighting source and is made with high condensing lens 25*60 degree or 10*60 degree. It has a long lifespan of up to 50000 hours. Compared with traditional lights, it saves more than 50% energy, the lens transmission rate is more than 92%. It's environmentally friendly, fast start, no flicker and no noise.

Application:

They are widely used for LED illumination, decoration for indoor and outdoor decoration, and assembly in slim light box. No need to place LGP in light box when using the product. No dark areas. They can be linked together without tools and the installation is easy and simple.



Product Picture:

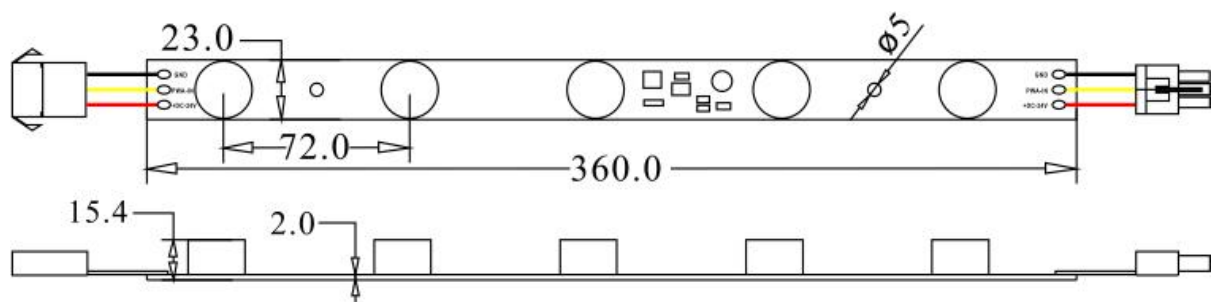


parameter:

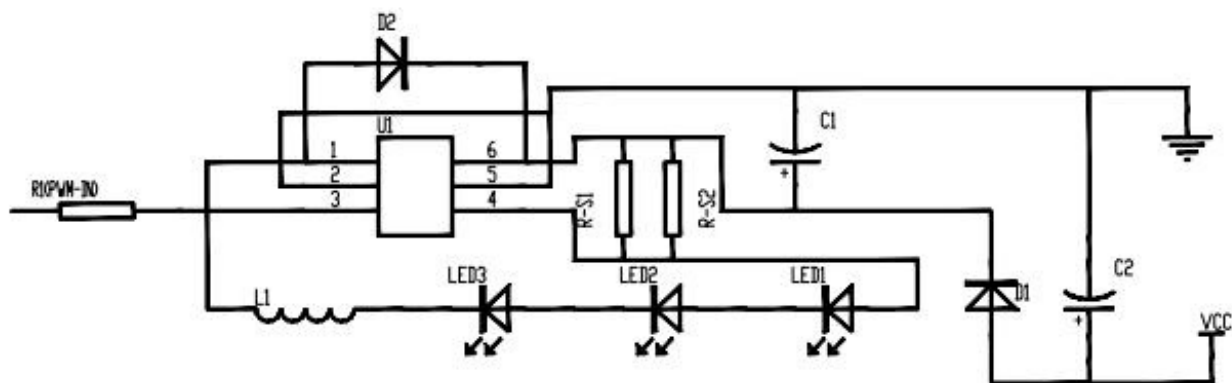
Part No.	LED Quantity	Power (w)	Luminous Flux	Input voltage	Color	View angle	Size (mm)	IP Rank	Working temperature
5045	Epistar High Power 5x3W	15W	750lm	DC12V	w/ww/cw	25°60	360*23*15	IP20	-20°C/+60 °C

Dimension:(mm)

5045 (IP20)



schematic diagram :



Power Configuration:

High Power Rigid Bar with 5 LEDs the maximum is 6pcs in one series.

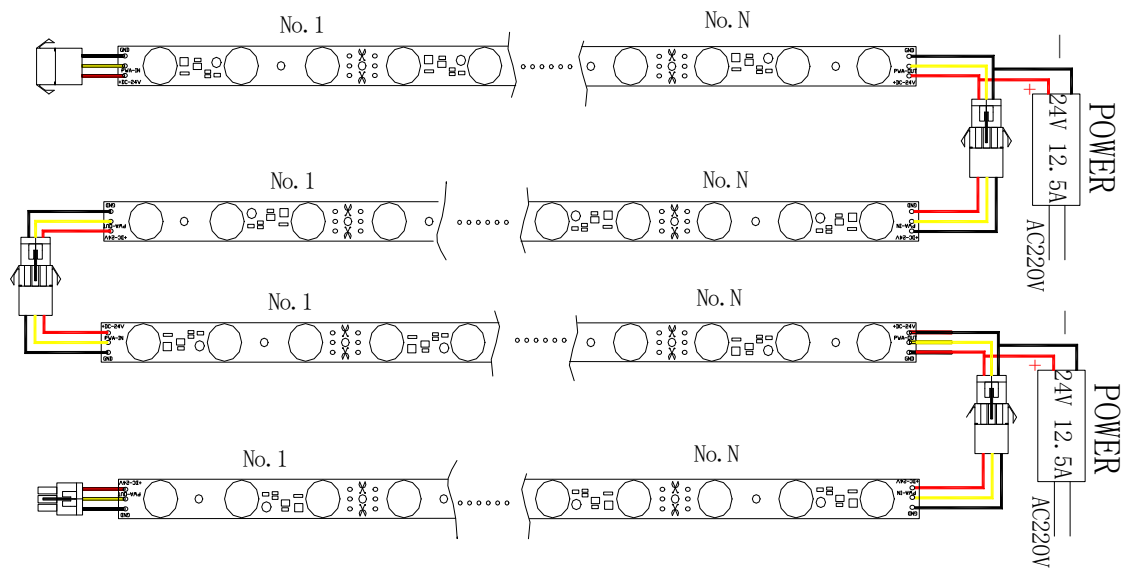
for example 5 leds each piece is 15W, according the following connecting way , a power supply driver 10 pcs total power is 150W, because in generally switching power factor set at 0.8, so the total power to select 187W (actual power 187W = total power X 0.8) power supply.

Heat Dissipation: during the light bar normal operation will cause a lot of heat, the higher the temperature the more luminous decay increase. Because in the using it's better to add an additional heat sink, supposedly, the bigger the better. generally the rigid bar is three times wider than the light bar, thickness 2MM or more.

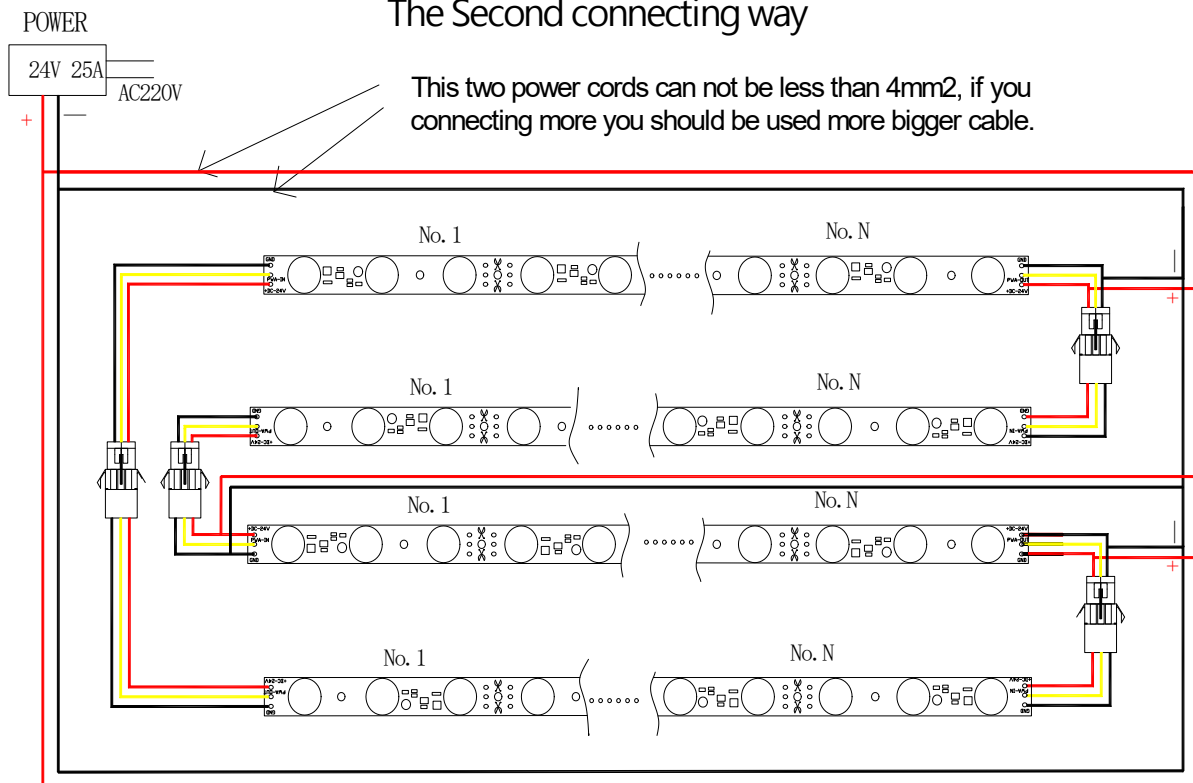
If power supply volume too big and lightbox don't have enough room. There are two ways solution as follows:

1. Use waterproof power plug outside instead
 2. Use two 150W power supply instead of one 300W power supply.
- calculates the power are according to specific quantity of led bars

The first connecting way



The Second connecting way



The first connecting way is fast and convenient for large installations.

The Second connecting way is more time-consuming, it's suited to narrow places.

How to choose the drivers:

The power of the driver should be 30% higher than the led rigid bar, for example, when the driver is 150w. You can just driver 105w led rigid bar. One rigid bar is 15W , so you need need 19.5W power supply.

Notice

- 1) Positive and negative electrodes must be connected correctly.
- 2) Keep the power off till all installation and connection is done.
- 3) Operating area must keep away from high temperature.

The installation way :

The led rigid bar is fixed and installed with screws

Mark for installation :

They are installing with screws and there are three wires one red, one black and one yellow color. The diameter of the wire is 20 AWG. The red one connect to the positive pole of power supply, and the black one connect to negative pole of power supply. The yellow is DIM wire. There are male and female connector on both end and it's easy to install them by hand by hand together.

Warning for installation :

- 1) Please connect the product correctly according to the specification. Make sure not over load the max power of the specification.
- 2) Please take care and protect the anti electrostatic when install and use them. Do not use sharp item to touch and hit the product.



Packing:

